

Ko Olina Chapel Place of Joy

Renewal open on October 17th 2018



92 -100 Kamoana Place Kapolei, HI 96707

Contact: hnldestination@watabe.com

Validity: July 1st – Dec 31st, 2019

Wedding Package

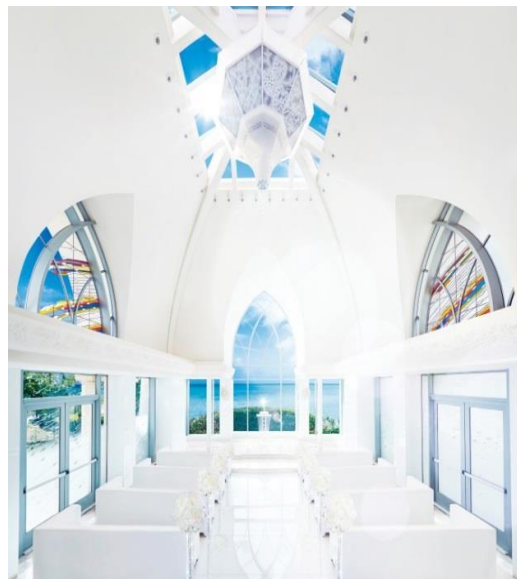
Wedding Ceremony

(Exclusive for 11am/2pm/5pm)

Light Plan: Jul.-Sep./Dec. \$2,233

Oct./Nov. \$2,483

- ① Location fee for Chapel (60 min)
- ② Minister (or Ceremony Master)
- ③ Musician (with electronic piano)
- ④ Coordinator
- ⑤ Keepsake Marriage Certificate
- ⑥ Basic fresh Bouquet (Orchid Short Clutch) & Boutonniere
- ⑦ Limousine for couple between Hotel (Waikiki / Ko Olina Area) to Wedding Location
- ⑧ Ko Olina Lagoon Beach Shooting Fee (for customer who purchased our photo/ video products)
- ⑨ Dozen Rose Ceremony
- ⑩ Guest Coordinator



Smart Plan Jul.-Sep./Dec. \$3400

Oct./Nov. \$3650

In addition to ① - ⑩, the following are included:

- ⑪ Wedding Dress (\$800) and Tuxedo (\$200) rentals
- ⑫ Hair and Makeup for the Bride (Waikiki Area Hotel)





Wedding Package

Ko Olina Party Wedding

Exclusive for 9am/10am/12pm/1pm/3pm/4pm/6pm

***6pm is only available between 7/1-8/31**

Light Plan: Jul.-Sep./Dec. \$2,483

Oct./Nov. \$2,733

In addition to the Wedding Ceremony Light Plan (① ~ ⑩)

- A) Reception Party at Ko Olina Vila for 2 people after ceremony –Menu “Ipolani” with Drink Pack A
- B) Party Coordinator
- C) Audio System & Monitor

Smart Plan: Jul.-Sep./Dec. \$3,650

Oct./Nov. \$3,900

In addition to ① - ⑩, and A-E, the following are included:

- F) Wedding Dress (\$800) and Tuxedo (\$200) rentals
- G) Hair and Makeup for the Bride (Waikiki Area Hotel)



Party Menu <Ipolani>

Ipolani

\$175 including Drink package A
(\$160 for persons under the age of 21)

Sparkling Wine for Toasting

Seafood Salad Hawaiian Poke Style

*Burdock Soup with Green Peas Risotto
and Sautéed Scallop*

*Pan Fried Mahimahi Served with
Grilled vegetable*

*Sirloin Steak with Sauce Diable
Served with Home Fries*

*Tropical Fruit Salad
with Mango Ice-cream*

Fresh Baked Bread

Tea or Coffee



Party Menu <Mauloa>

Mauloa

\$190 including Drink package A
(\$175 for persons under the age of 21)

Sparkling Wine for Toasting

*Lightly Smoked Local Kampachi
with Caviar and Meyer Lemon*

Foie Gras Croquette

*Oven Roasted Local Onaga
with Clam Soup*

*Grilled Beef Tenderloin with
Edamame
and Potato Galette*

*Deep Fried Hawaiian Sushi Roll
topped with Ikura*

*Kona Coffee Pannacotta and
Chocolate Banana Brownie
with Coconut Pie Stick*

Fresh Baked Bread

Tea or Coffee



Party Menu<Ku'u Aloha>

Ku'u Aloha

\$215 including Drink package A
(\$200 for persons under the age of 21)

Sparkling Wine for Toasting

Appetizer Trio:

Coconut Shrimp with Sweet Chili Sause

Lomi Salmon Bruschetta

Acai and Potherb Smoothie

Seared Ahi

with Shiso and Lili'koi Dressing

Sautéed Lobster and Scallop

with Ethnic Flavor Sauce

*Grilled Wagyu Beef served with Taro Sauce
and Red wine and Shallot Sauce*

*Maui Onion Risotto and Deep Fried Mahi Mahi,
Japanese "Chazuke" Style*

*Lili'koi and Chocolate mousse, Fresh Mango
and Meyer Lemon Shave Ice*

Fresh Baked Bread

Tea or Coffee



Party Menu <Child's Menu>

**Includes: non-alcoholic drink pack
\$55 /person
(Under 9 years old)**



- Deep Fried Shrimp
- Hamburger Steak
- Omelet Rice
- Sandwich
- French Fries
- Salad
- Assorted Dessert
- Non-Alcoholic Drink Menu

Drink Package

Drink Menu A * Included in the menu	Drink Menu B \$15 per person	Drink Menu C \$20 per person
<p><Beer> Budwiser Coors Light</p> <p><House Wine by glass> White Wine Red Wine</p> <p><Fruits Juice> Apple Orange Grapefruit Guava Pineapple</p> <p><Soda> Coca Cola Ginger Ale Lemon Lime Soda Tonic Water</p> <p><Coffee and Tea> Oolong Tea Iced Tea Iced Coffee</p>	<p>* In addition to Drink Package A</p> <p><Beer> Kona Longboard Kona Big Wave Primo Asahi Kirin</p> <p><Chef's Selection Wine by the glass> White Wine Red Wine</p> <p><Shochu> Kitchou Houzan</p> <p><Non alcohol> Plantation Iced Tea</p>	<p>* In addition to Drink Package B</p> <p><Whisky> Jack Dannel's</p> <p><Sake> Hakkaisan Junmai Sake</p> <p><Cocktails> Chi Chi Screw Driver Pina Colada Blue Hawaii Mai Tai Mojito Gin Tonic</p>

Party Flowers

《Chapel Exclusive Party Flowers》

Seaside White



Main Table \$580
Center Table \$400

Napkin Flower \$13
Glass Flower \$13

Party Flowers

《Chapel Exclusive Party Flowers》

Blush Pink \$230



Main Table \$600
Center Table \$455

Napkin Flower \$13
Glass Flower \$13

Party Flowers

《Chapel Exclusive Party Flowers》

Main Table

Brilliant Joy \$325



Center Table

Brilliant Joy \$230



Pink Perfection \$325



Pink Perfection \$230



Party Flowers

Main Table

Grace White \$300



Precious Pink \$300



Sunshine Yellow \$250



Center Table

Grace White \$205



Precious Pink \$205



Sunshine Yellow \$165



Wedding Cake

Drip Cake

1 tiers, 15srv
--- \$ 265
2 tiers, 30srv
--- \$ 465



Pink Cake

1 tier, 8srv
--- \$290
2 tiers, 15srv
--- \$ 530
3 tiers, 30srv
--- \$ 680



Rustic Cake

1 tier, 8srv
--- \$ 215
2 tier, 15srv
--- \$ 355
3 tier, 30srv
--- \$540



Color Drip Cake

1 tier, 8srv
--- \$265
2 tier, 15srv
--- \$515
3 tier, 30srv
--- \$830



Strawberry Naked Cake

1 tier, 8srv
--- \$280
2 tier, 15srv
--- \$450
3 tier, 30srv
--- \$605



Beauty

◆ **Bride's Makeup and Hair**

- Waikiki Hotel: \$380
- Additional fee for Condo or House: \$165
(including Kahala Hotel)
- Additional fee for outside of Waikiki area: \$300

◆ **Rehearsal Makeup A : \$ 325** (Rehearsal Makeup and maximum 2 style hair set up)

◆ **Rehearsal Makeup B : \$ 365** (Rehearsal Makeup and maximum 3 style hair set up)

◆ **Hair Style Change: \$355** (Waikiki Hotel or Watabe Salon)

◆ **Hair set & Makeup for Groom: \$115**

◆ **Hair set & Makeup for Guest (Women): \$225**



Bouquet

*All bouquets come with a boutonniere

*You can also choose Head Piece and Haku Lei (Flower Crown) for your matching headpiece (additional charge will be applied)

<Standard Bouquet>

Orchid Clutch (Included in the Package)



Head Piece \$ 80

Haku Lei \$ 180



<Chapel Exclusive Upgrade Bouquet>



Brilliant Dew (HB-51) \$ 340

Head Piece \$ 140

Haku Lei \$ 265



Pink Perfection (HB-52) \$ 400

Head Piece \$ 140

Haku Lei \$ 265

Bouquet

**All bouquets come with a boutonniere.*

<Upgrade Bouquet>

NEW!



**Seaside Rustic
(HB-56) \$540**
Head Piece \$175
Haku Lei \$265



**Garden Rose &
Silver leaf Clutch
(HB-53) \$565**
Head Piece \$175
Haku Lei \$265



**White Natural Clutch
(WB-14) \$480**
Head Piece \$140
Haku Lei \$265



**Baby Blush
(HB-57) \$650**
Head Piece \$175
Haku Lei \$265



**Blooming Forest
(HB-54) \$480**
Head Piece \$140
Haku Lei \$265



**Wreath of Garden
(HB-55) \$340**
Head Piece \$140
Haku Lei \$265



Bouquet

*All bouquets come with a boutonniere

*You can also choose Head Piece and Haku Lei (Flower Crown) for your matching headpiece (additional charge will be applied)

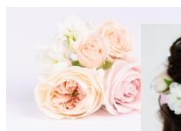
<Upgrade Bouquet>



Sweet Mode
(HB-38) \$450
Head Piece \$175
Haku Lei \$265

Moth Orchid Clutch
(HB-41) \$480
Head Piece \$140
Haku Lei \$ 265

White Rose Clutch
(WB-24) \$205
Head Piece \$125
Haku Lei \$250



Pink Rose Clutch
(WB-25) \$205
Head Piece \$125
Haku Lei \$250

Le Ciel
(HB-48) \$405
Head Piece \$175
Haku Lei \$ 265

Baby's Breath
Clutch (WB-15) \$280
Head Piece \$155
Haku Lei \$ 250

Yellow Rose and Baby's
Breath (WB-16) \$325
Head Piece \$200
Haku Lei \$265

Bouquet

**All bouquets come with a boutonniere.*

<Upgrade Bouquet>



Green Mix & White Clutch
(HB-39) \$365
Head Piece \$140
Haku Lei \$265



Romantic Tropical
(HB-47) \$340
Head Piece \$175
Haku Lei \$265



Lavender Garden
(HB-45) \$300
Head Piece \$115
Haku Lei \$265



Natural Rustic
(HB-46) \$315
Head Piece \$175
Haku Lei \$265



Stylish Resort
(HB-42) \$315
Head Piece \$140
Haku Lei \$265



Sweet Harmony
(HB-44) \$290
Head Piece \$115
Haku Lei \$265



Peach Pastel Mix Rose
Round (WB-26) \$250
Head Piece \$125
Haku Lei \$250

Bouquet

**All bouquets come with a boutonniere.*

<Upgrade Bouquet >



**White Rose Natural
Cascade (WB-27) \$290**
Head Piece \$125
Haku Lei \$250



**Peach Rose Natural
Cascade (WB-28) \$325**
Head Piece \$125
Haku Lei \$250



**Pale Pink & Cream
Cascade (WB-13) \$315**
Head Piece \$130
Haku Lei \$265



**Shabby Elegance
(WB-17) \$ 380**
Head Piece \$200
Haku Lei \$265



**Pastel Blue Round
(WB-180) \$340**
Head Piece \$155
Haku Lei \$250



**Yellow Plumeria Round
(HB-21) \$355**
April – August ONLY
Head Piece \$130
Haku Lei \$265



**White Rose Round
(WB-23) \$240**
Head Piece \$125
Haku Lei \$250



**Bride's Maid Bouquet
\$105**
Matching color for bride's bouquet
Size: 6 inch /Style: Clutch
**※Must purchase upgrade
Bouquet**



**Groom's man
Boutonniere \$25**
Matching color for bride's bouquet
**※Must purchase upgrade
Bouquet**

Lei



Orchid Lei Pink & White
--- \$40



Orchid Lei White
--- \$40



Orchid Lei Double White
--- \$80



Tuberose & Ilima
--- \$80



Stylish --- \$80



Lovely --- \$80



Kukui (Mock) --- \$80



Maile Lei --- \$115

Lei & Flower Shower



Kid's Cookie Lei

Rainbow-\$25



Flower Shower:

➤ Color Selected from

White & Yellow

White & Pink

White

One Bag --- \$175

Additional --- \$130

➤ Non-Specific Color

One Bag --- \$150

Additional --- \$115

**One Bag is for 6 people*



■ Guest Transportation (Waikiki ~ Ko Olina RT)

	Price
Any Car Type (Max 4 ppl)	\$590
Limo (Max 6 ppl)	\$630
Van (Max 11 ppl)	\$730
Mini Bus (Max 22 ppl)	\$890



Cancellation Policy

Wedding Package Cancellation and/or Change Policy – A

- ©20% of wedding package fee will be applied if cancelled and/or changed within 30 to 16 days prior to the scheduled wedding ceremony.
- ©50% of wedding package fee will be applied if cancelled and/or changed within 15 to 3 days prior to the scheduled wedding ceremony.
- ©100% of wedding package fee will be applied if cancelled and/or changed within 2 days of the scheduled wedding ceremony, or no contact is made on the day of your wedding.



Wedding Package Notice

- Wedding will be officiated by a Christian minister.
- A civil wedding can be arranged for an additional fee of \$250. Please notify us when you make your reservation.
- No extra transportation fee will be applied for guests, if the reception is held in the Ko Olina Area following the wedding ceremony. (Driver and Car Type may differ from arrival and departure of the ceremony.)
- There will be an extra charge (\$40) for legal wedding as process fee.



Cancellation Policy

OP-A

- ©50% of an item fee will be applied if cancelled within 15 to 3 days of the scheduled wedding.
- ©100% of an item fee will be applied if cancelled within 2 days prior to the scheduled wedding or no contact is made on the day of the scheduled wedding.

OP-B

- ©50% of an item fee will be applied if cancelled within 30 to 16 days of the scheduled wedding.
- ©100% of an item fee will be applied if cancelled within 15 prior to the scheduled wedding or no contact is made on the day of the scheduled wedding.



Wedding Option Notice

Common Option Notices

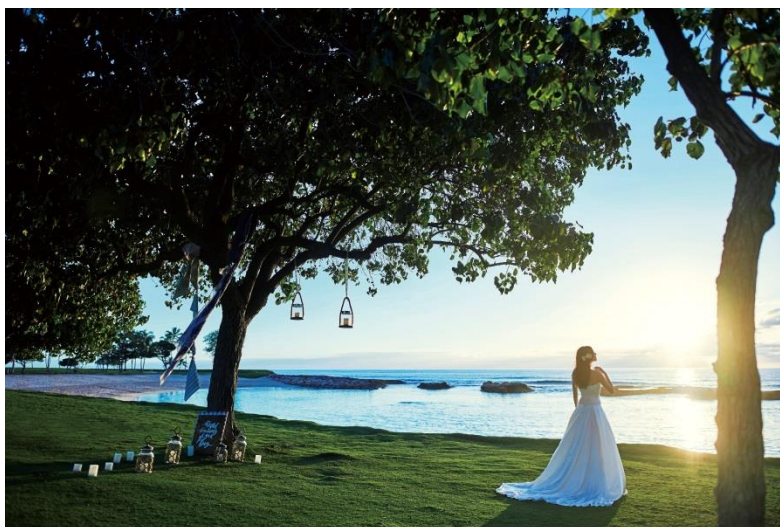
- Please reserve a reception at least 40 days prior to the departure date (excludes some items). Please be aware that some items may be difficult to purchase if they are not ordered at least 40 days in advance.
- All products and services may be cancelled or changed without notice, due to unforeseen or unexpected circumstances beyond Watabe's control. If it is cancelled by Watabe's circumstances, we may refund the amount of products or services. However, if it is cancelled by the customer's circumstances, a cancellation fee will be applied.
- Options may be paid with cash, cashier's check, traveler's check (\$), or credit card (VISA, MASTER, JCB). Option items under local currency (such as \$) will be tax exclusive.
- Photo and video shooting during the ceremony by guests and outside vendors (NOT Watabe contracted vendors) are not allowed. Those vendors who are not contracted by Watabe are prohibited to provide any photo and video shooting services, musical performances, beauty services, flowers, food & beverages, etc., during Watabe's wedding program. (Watabe's wedding program starts from customer's hotel departure, and ends with the hotel arrival.)
- Product contents or prices may change without notice.
- If there should be any dissatisfaction about purchased merchandises, please notify us immediately. Watabe may not take responsibility if a grievance is made after a certain amount of time after the wedding.
- Please be aware that the actual option item may look different from the brochure.



Wedding Option Notice

Beauty

- Beauty options' starting time or schedule will be adjusted at each local area.
- Certain beauty options may not be available depending on your arrival schedule.
- Please bring your own cleansing cream/makeup remover, and basic cosmetic products when attending a rehearsal makeup. A wedding gown fitting will be scheduled after the rehearsal makeup so please bring your wedding gown, accessories, and undergarment.
- For the beauty services, please let your stylist know your request during the hair & makeup service. Please be aware that we may not take any responsibility for grievances after the beauty services are completed.
- The stylist on the day of the wedding may be different from your rehearsal makeup stylist.
- Shaving, shampoo, hair cutting is not included in the beauty option. Please be prepared before your service begins.
- If you have ordered beauty options for your guests, please let us know their names and hotel names in advance.
- Due to unavoidable circumstances with the "Stylist Request," Watabe may decide an alternative or cancellation. Watabe will contact you in advance for any cancellation.



Wedding Option Notice

Media

- Album & DVD products will be delivered to the customer's requested address about 45 days after the wedding date. (Shipping fee will be included. Excludes certain products and photo selects.)
 - For items that are scheduled to be picked up at Watabe Honolulu branch, but the customer is unable to, they can be mailed to the requested address. (Mailing and handling charge may apply.)
 - Generally, data for photo and DVD will be kept 6 months after the ceremony and will be deleted thereafter. Data requested after the wedding may not be available or an extra fee may apply.
 - Due to unforeseen circumstances beyond Watabe's control, shooting locations may be changed or cancelled. If the shooting is cancelled, we may refund the amount, and a cancellation fee will not apply. However, if the shooting is included in a wedding package, a refund may not be applicable.
 - Please be aware that a public location such as the church, hotel, beach, or park may be crowded with people. It is possible that the crowd may be visible in your media products.
 - Please be aware that all contents are subject to change without notice, for the improvement of these services.
 - There will be no coordinator provided for additional photo tours. In this case, the photographer will be available for help.
-

Wedding Option Notice

- Album and DVD contents are based on photographers' and videographers' discretion for shooting and selection of footage.
 - An additional transportation fee will apply if guests wish to join an additional photo tour or a shooting between the ceremony and reception.
 - When shooting the preparation scene, certain hotels may restrict shooting area. Certain hotels in Hawaii do not allow photo shooting at the hotel lobby, or hotel entrance with the limousine. Watabe will make a decision, whether to conduct the shooting based on the circumstances at that time.
 - Any additional album or mini album order will have the same content as the purchased original album or mini album. If you would like to make a different copy, an extra fee will be applied.
 - If two or more different kind of albums are ordered, some pictures may be duplicated in the albums.
 - Data will be edited properly (photos with closed eyes, bugs or animals will be deleted). Editing, including color adjusting and deleting of improper photos will be decided upon Watabe editors.
 - Common Notices for Additional Photo Shooting (including the Wedding Package Inclusive Photo Shooting)
 - ※Additional photo shooting is an option to the wedding package. It is available for customers who ordered media products (or Data-only product). It will not affect the number of photos in the album. Shooting locations cannot be designated.
 - ※Additional photo shooting will include couple's transportation.
 - ※Additional photo shooting will include a CD-R with the shot photos. This may be included in the CD-R with the album but it may be recorded separately. Out of all the shot photos, 10% or more of the additional photos will be included in the ordered album.
 - ※For each plan, the required shooting time will be measured from the ceremony site departure to the end of the photo shooting. (Excludes additional party photo shooting or hotel photo tours.) This may vary depending on the hotel location and traffic conditions.
-

Wedding Option Notice

- The resolution of the photo data will be 8 mega-pixels in JPEG format. Generally, it may be compatible on most Windows computers, but it is not guaranteed for all types of photo prints. Also, the time that is recorded on the data, may differ to the actual time during the wedding.
 - Additional photo/video tour, or a photo shooting included in the wedding package, may be scheduled before the wedding, depending on the wedding schedules. Also, the customer may not designate the photo shooting sites on their own.
 - A copy of the DVD order is available only with the same original contents (ceremony to ceremony, preparation to preparation). Please order your copy beforehand. If a copy is requested after the video shooting, the order may not be acceptable, and/or there may be a difference in charge.
 - We cannot use any music with copyrights.
 - You may choose “DVD” or “Blu-Ray” for video products. It will be recorded under the aspect of 16:9 with NTSC.
- ©DVD: Recorded to DVD-R with NTSC form. It is not a product of HDTV or BD.
- ©Blu-Ray: Blu-Ray disc with high vision aspect – NTSC form. You will need a Blu-Ray disc player to watch this disc.
- ※ NTSC form: A television broadcasting system that is used in North America and Japan.
- ※ 16:9 aspect: Wide screen ratio of screen
- ※ HDTV: High Definition Television – TV with improved quality
- ※ BD product: Blu-Ray product
- Due to unavoidable circumstances with the “Photographer Shimei (Request),” Watabe may decide an alternative or cancellation. Watabe will contact you in advance for any cancellation.
-

Wedding Option Notice

Flower

- For fresh flower merchandises (except for bouquets and headpiece), you may not specify flower types.
- Due to weather and other unexpected conditions or circumstances, Watabe may not be able to arrange certain flowers for some bouquets. Also, flowers may vary from the image shown on the brochure. Watabe will decide on alternative flowers, in case we have insufficient materials of the original flower.
- For pressed flowers, color and size may differ from fresh flowers after the processing. Also, not every part of the flowers can be preserved (especially fruits or nuts). If the bouquet is damaged or discolored, we have the right to exchange or replace with alternative flowers to match the design.
- If a special bouquet is requested, please provide a clear, color-copied picture of the bouquet for floral material details to Watabe Wedding at least 40 days in advance.

Transportation

- When transportation for guests or a trolley tour is ordered, please notify Watabe with: the number of guests, the name of the representative, and hotel names. Transportation order may not be arranged if there is no detailed information at the time of reservation.
- Rear seat passengers must fasten their seatbelts under Hawaii traffic regulations.
- Total capacity must include children and infants.



Wedding Option Notice

Hawaii Option Notice

<Island of Oahu>

- Products to be picked up at the local branch will be available 2 days after the wedding. If it is not picked up for any reason, we may ship to the requested address for an additional shipping & handling charge. (Estimated shipping & handling charge per album: \$30 to \$150.)
- If you order an additional photo shooting after the party, there will be an additional transportation charge.
- If you order the babysitter options, we may ask for your child's information such as name, height, and weight. If you have 2 children, you will be required to order 2 babysitters for your child's safety. Please reserve the babysitter option at least 30 days before the wedding date. The babysitter will come to your hotel room in the beginning and in the end (15 minutes each). Please provide any materials needed: stroller, food, drink, medicines, change of clothes, diapers, baby wipes, baby bottle, powdered milk, or snacks. If you request to have a babysitter early in the morning, please contact Reservation.



